



TE PUA O TE RIRI KORE

**Ngāti Hāua Deed of Settlement
Ratification Information Hui**

Overview

- ▶ On 21 November 2024, the trustees of Ngāti Hāua initialled a Deed of Settlement – Te Pua o Te Riri Kore – with the Crown.
- ▶ Ngāti Hāua uri now need to ratify the Deed of Settlement and the proposed post-settlement governance entity (PSGE) – Te Whiringa Kākaho o Ngāti Hāua.
- ▶ **Voting for registered adult members opened on 21 December 2024 and will close at 5pm on 7 February 2025.**
- ▶ After 14 February 2025, our Independent Returning Officer - Electionz – will report on the results of ratification voting.
- ▶ At the end of February 2025, the Crown will confirm, based on ratification voting, whether to proceed to signing of Te Pua o Riri Kore.
- ▶ If the iwi approves:
 - ▶ The PSGE will be established in readiness to receive and manage settlement assets on behalf of Ngāti Hāua; and
 - ▶ Te Pua o Te Riri Kore will be signed at Ngāpūwaihaha Marae, Taumarunui

Kaupapa o Te Hui



- To inform Ngāti Hāua uri of :
 - The proposed terms of settlement contained in Te Pua o Te Riri Kore (the Ngāti Hāua Deed of Settlement)
 - The proposed post-settlement governance entity (PSGE) for Ngāti Hāua – Te Whiringa Kākaho o Ngāti Hāua
 - The ratification (approval) process for Te Pua o Te Riri Kore (the Ngāti Hāua Deed of Settlement) and Te Whiringa Kākaho o Ngāti Hāua (the PSGE)



What are you being asked to vote on?

Resolution 1:

I, as a member of Ngāti Hāua, agree to support and accept the Ngāti Hāua Deed of Settlement – Te Pua o Te Riri Kore – and authorise the trustees of the Ngāti Hāua Iwi Trust to sign the Deed of Settlement on behalf of Ngāti Hāua.

Resolution 2:

I agree that the proposed Te Whiringa Kākaho o Ngāti Hāua Trust will be the post-settlement governance entity for Ngāti Hāua to receive and manage Treaty of Waitangi settlement redress on behalf of Ngāti Hāua.

Ki Te Matapihi – Journey to Settlement

2017 – 2022 Mandate & Negotiations

22 October 2022 – Agreement in Principle signed

21 November 2024 – Initial Deed of Settlement

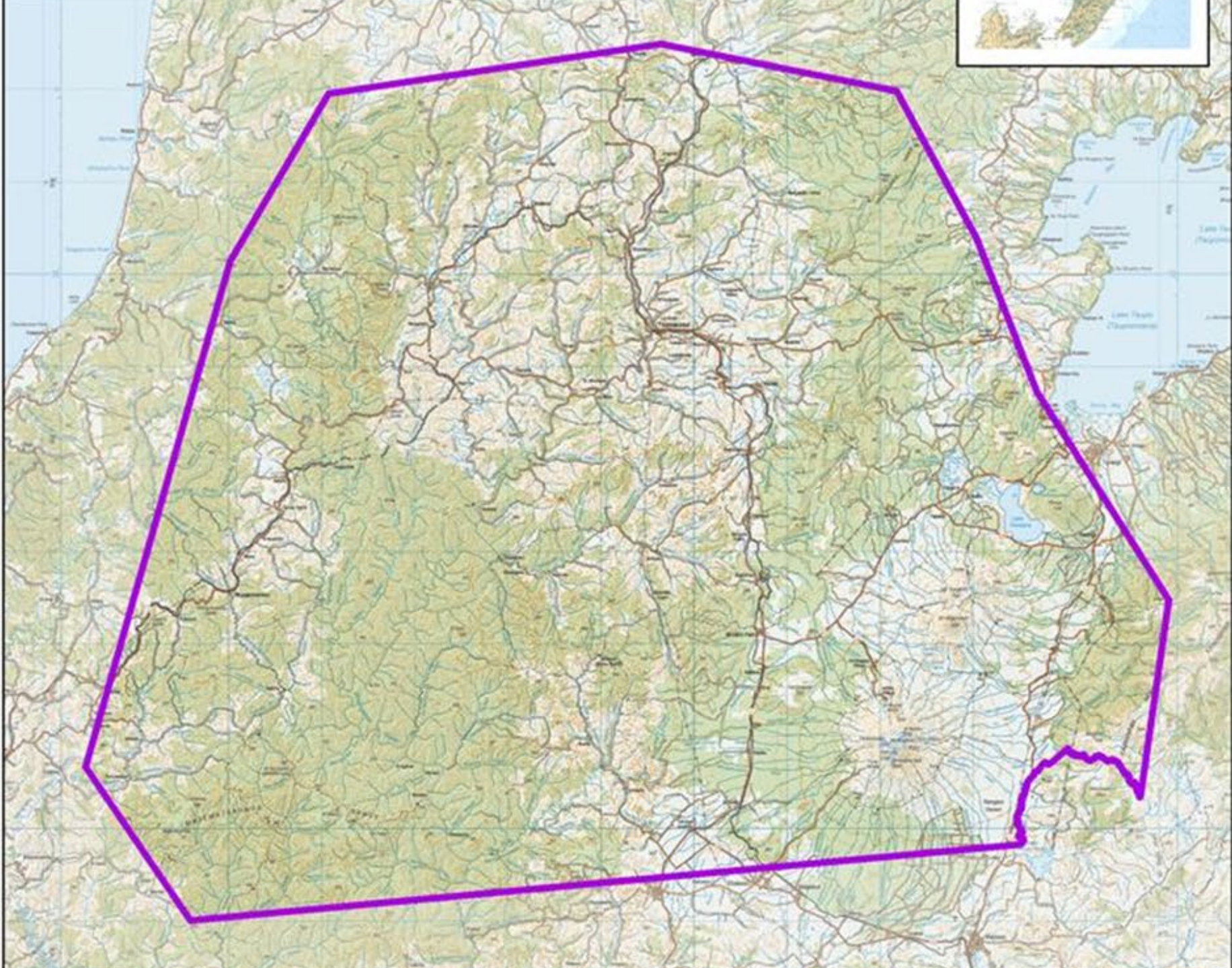
Late 2024/early 2025 – Iwi vote on DOS & PSGE

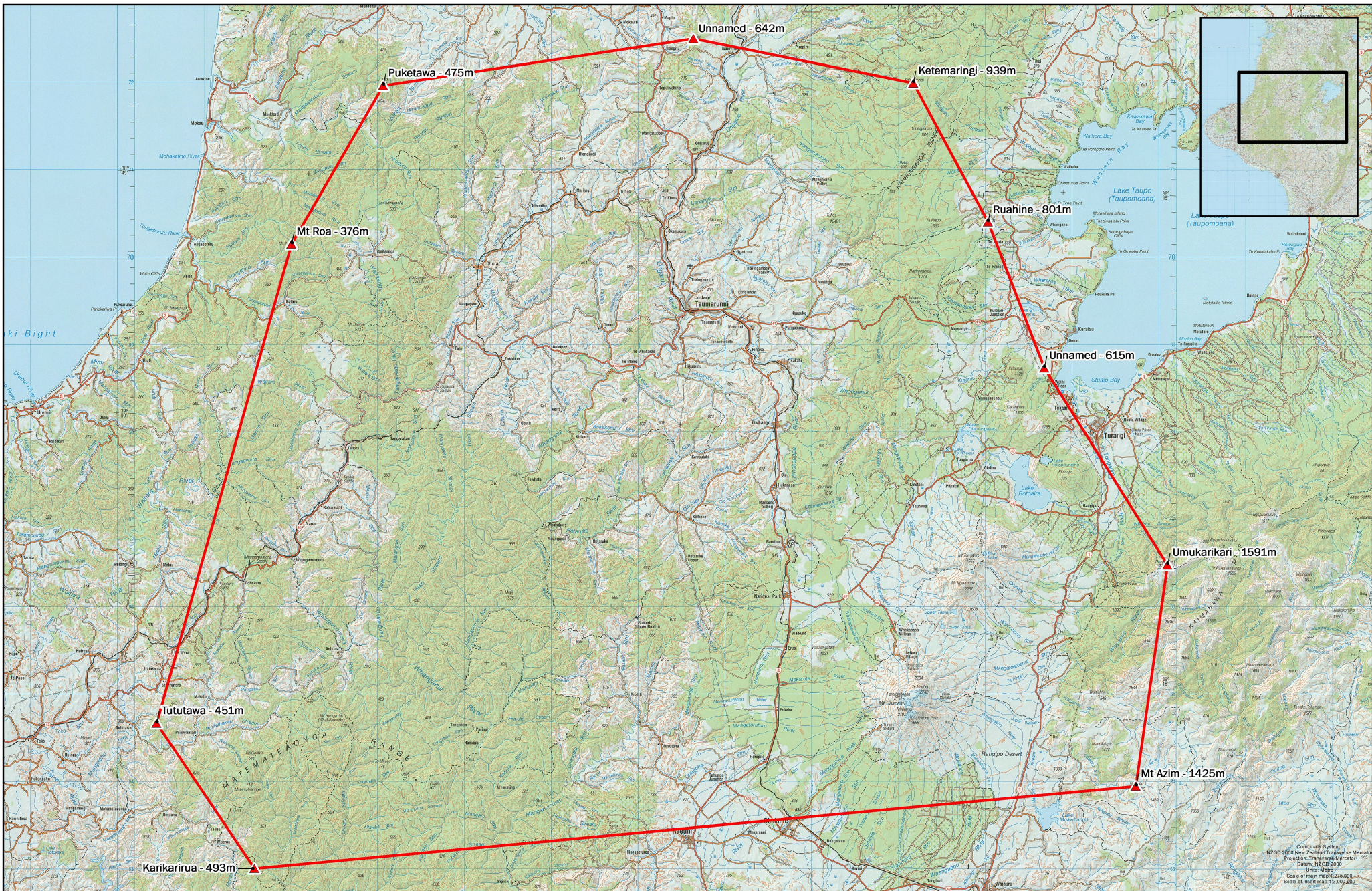
2025 – Deed of Settlement signed & Bill introduced into Parliament

TE PUA O TE RIRI KORE – KEY FEATURES

- MURUNGA KORE – TE WHAREAITU & TE RANGIĀTEA
- I RIRO WHENUA ATU, ME HOKI WHENUA MAI
- PŪTEA – TO GROW OUR ECONOMIC BASE
- TE TATAIRANGO O TE KARAUNA – TIRITI BASED PARTNERSHIPS







Legend

- ▲ Boundary Points
- ▬ Ngati Haua A.O.I. - 929846 ha



MAP ID:

Sources:
 Ngati Haua Area of Interest provided by the respective claimants. LINZ basemap datasets are licensed for re-use under the Creative Commons Attribution 3.0 New Zealand licence.

Map created by EnviroMap under contract to CFRT
 Date: 06/05/2020

Coordinate system:
 NZGD 0509 New Zealand Transverse Mercator
 Projection: Transverse Mercator
 Datum: NZGD 2009
 Units: Metres
 Scale of base map: 1:250,000
 Scale of inset map: 1:3,000,000



Te Pua o Te Riri Kore Summary

Te Rongo Niu – Statutory Pardons

Te Pou Tikanga

Te Hohourongo - Historical account, Crown acknowledgements, Crown apology

Te Pātaka - Financial redress

Commercial property redress

Ngāti Hāuatanga - Cultural redress

Te Tātairango - Relationship redress

Te Pou Tikanga

► Ngāti Hāuatanga

- “Kia toitū te mana whakauu nā Ngāti Hāua.”
- To ensure the survival of the Ngāti Hāua Iwi identity.

► Riri Kore: To ensure the **continuity** of Ngāti Hāua tikanga.

- “Na ngā tupuna i hauroatia te maru o te tangata.”
- The length of a person's shadow is cast by their ancestry.

► Rongo Niu: To hold the Crown to **account**. The Crown has a responsibility to enhance and uphold Te Tiriti o Waitangi relationship with Ngāti Hāua Iwi

- “Tā te rino i tukituki ai, mā te rino ano e hanga.”
- What iron has destroyed, iron will again rebuild





- **Rangitengaue:** Ngāti Hāua **Self Determination.**
Ngāti Hāua solutions for Ngāti Hāua people
 - “Mā te piharau anō te piharau hei whakatika.”
 - It is for the Piharau, to correct the Piharau.
- **Kokako:** Uphold our inherent right of **kaitiakitanga.**
 - “Ko te Awa te tuatahi, ko te Awa te tuarua.”
 - The River first, the River second.
- **Tapaka: Te Ara Whanaunga:** maintain the integrity of our relationship with others.
 - “He huinga Wai, he huinga Iwi.”
 - The joining of waters, the union of people.
- **Tamahina:** Make **decisions** based on ancestral precedent (tikanga) and values (kaupapa).
 - “A mua, i muri, ou korero.”
 - The answers for tomorrow, lie in the lessons of the past.

Te Rongo Niu – Statutory Pardons

From 1820s, Ngāti Hāua had lived in Heretaunga.

- In 1846, conflict broke out in the Heretaunga valley.
- 3 March 1846 – Governor Grey declares martial law
- 16 May 1846 – Ngāti Hāua taua attack Boulcott's Farm Stockade.
- 1 August 1846 – two Ngāti Hāua tūpuna captured by kupapa iwi near Pauatahanui – Mātene Ruta Te Whareaitu and Te Rangiātea.
- 14/15 September – military court martial at Paremata.
- Te Rangiātea found guilty of being an armed follower of a rebel chief, and for having acted, aided and assisted in the rebellion against the Crown.
- Following the verdict, two medical officers provided opinions to the Court Martial that Te Rangiātea was of 'unsound mind'. The Court Martial then sentenced Te Rangiātea to confinement as a lunatic for the remainder of his life. He died in state care two months later.

- Mātene Ruta Te Whareaitu was found guilty of being an armed follower of a rebel chief, of resisting and wounding one of the Crown's Māori allies and for having acted, aided and assisted in the rebellion against the Crown.
- He was sentenced to be hanged by the neck until death. The commanding officer of military forces in the southern division described how Te Whareaitu's execution was to serve as "an example to the Natives many of whom were present".
- The Crown executed Mātene Ruta Te Whareaitu by hanging on 17 September 1846. This event was described in the New Zealand press as "a most sanguinary display of vengeance".

Te Rongo Niu

- ▶ Te Pua o Te Riri Kore record the Crown's treatment of Te Rangiātea and Mātene Ruta Te Whareaitu under martial law, including the exceptional harshness of their punishments arising from events in the Wellington region in 1846 and the resulting intergenerational stigma and mamae experienced by their uri and by Ngāti Hāua.



Murunga Kore – Statutory Pardons



- ▶ “Te Rangiātea and Mātene Ruta Te Whareaitu are pardoned for their convictions, and their character, mana, and reputation, as well as that of their uri, are recognised.”



Te Poroporoaki nā Te Whareaitu

*E rere rā e te aouru, tāuhōkai
ana i runga rā,*

*Kaikawe kōrero ki te iwi ka
wehea,*

*Nānā te punga i tuku ki raro
waka,*

*Rehurehu ai ngā tuku ki a Kapiti
rā,*

Kia tangi au, homai kia ringia,

He puna wai kei aku kamo.

Transition the dawn within your
expanse above,

Messenger to the people of my
impending demise,

Setting the anchor of my waka
(determining my fateful
departure),

Tearfully obscuring the last
tributes to Kapiti afar,

Initiating my heartfelt lament,
permeating in the release

Of the pool of tears from my
eyes.

Te Hohourongo – Crown Apology & Acknowledgements

- ▶ The Crown is deeply ashamed of and sorry for the horrific and reprehensible execution of your tupuna in 1846 and profoundly regrets that its behaviour toward Ngāti Hāua in the 1840s sowed deep and well-deserved mistrust of the Crown.
- ▶ In the 1860s, Crown actions led to warfare between the Crown and Ngāti Hāua. The Crown is sincerely sorry for the severe toll warfare has had on Ngāti Hāua and the intergenerational stigma you still carry from being labelled rebels and fanatics



Crown Acknowledgements



- 35 Crown Acknowledgements including:
 - Hauhau/Rebels
 - Heretaunga
 - Te Rangiātea & Te Whareaitu
 - 1863 Raupatu/confiscation
 - Parihaka
 - Waimarino alienation
 - Native Township
 - Stigma as hauhau/rebels
 - Arsenic in flour



Te Tāhuhu Kōrero – Historical Account

- Heretaunga
- Kingitanga
- Ōhoutahi
- 1863 confiscation
- Native Land Court, inc Waimarino block
- Parihaka
- Native Township
- Public works takings
- NIMT railway
- TNP and Tongariro Power Development
- Whanganui scenic reserves & national park

TE PĀTAKA - Pūtea

- \$19 million financial redress (“quantum”)
- \$6.1 million cultural package (including cultural revitalisation & cultural redress properties)
- \$1.4 million cultural fund (the “Te Wera Forest” deal)
- Est. interest of \$3.15 million (to Dec 2025)
- **\$29.65 million total settlement value**
- On-account option of early advance of \$3.8million if DOS signed



TE POU WHENUA - Commercial Properties

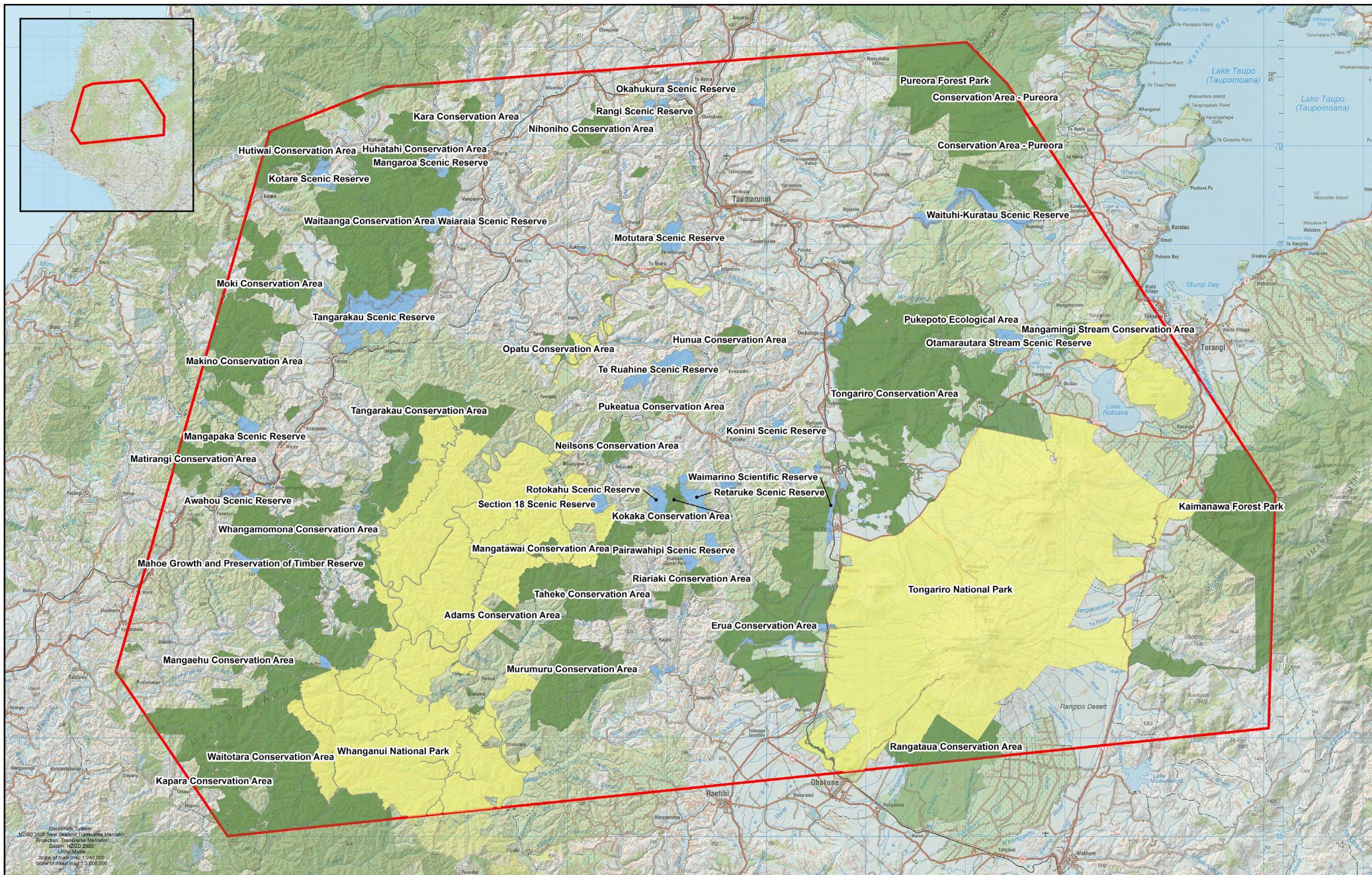


- 4 properties at settlement - \$900k
- Sale & leaseback
 - Manunui School (land only)
 - Taumarunui Courthouse (land only)
- DSPs for 40 Crown properties (14.54 ha) inc:
 - Taumarunui High School
 - Taumarunui Primary School
 - Cnr Hakiaha/Katarina Streets
 - Bell Road
 - 16 Ward Street

Commercial Properties



- Right of first refusal on 125 Crown properties (inc. 38 Kainga Ora houses in Taumarunui).
- Delayed shared DSP for Raurimu Farm
- 10 second RFRs
- Kiwirail Area RFR
- 6 joint RFRs



Geographic System:
NZGD 2000 New Zealand Transverse Mercator
Projection: Transverse Mercator
Datum: NZGD 2000
Units: Metres
Scale of finished map: 1:400,000
Scale of inset map: 1:3,000,000

- NATIONAL PARK - 141,241 Ha
 - CONSERVATION AREA - 152,796 Ha
 - RESERVE - 14,218 Ha
 - MARGINAL STRIP - 403 Ha
- (Areas approximate only, Conservation areas smaller than 200 Ha are not labelled)

DEPARTMENT OF CONSERVATION LAND WITHIN THE NGATI HAUA AREA OF INTEREST



MAP ID: 13

Sources:
DOC Public Conservation area dataset sourced from the Koordinates Geportal (koordinates.com).
Topographic and aerial basemaps sourced from the LINZ Data Service <http://data.linz.govt.nz>. LINZ & Koordinates datasets are licensed for re-use under the Creative Commons Attribution 3.0 New Zealand licence.
Map Composition: Central Plateau GIS Services under contract to CFRT



Te Pou Whenua – cultural properties

- 16 fee simple sites including:
 - Makakote Pā
 - Kirikau No. 3 Scenic Reserve
 - Marsacks Conservation Area
 - Depot Road Conservation Area
 - Kaiwhakauka Conservation Area
 - Falls Conservation Area
 - Tāhora Saddle Conservation Area
 - 4 landbanked properties (Kākahi School, Kirikau School, 2 sections at Piriaka)
 - 2 “hydrolands parcels” - Ngā Huinga/Tūmoana & Matahanea
- 21.3ha, cost of \$2.722 million



TE POU WHENUA - Cultural properties

- 45 reserves vested in Ngāti Hāua including:
 - Ngā Huinga (Cherry Grove Reserve)
 - Bed of Pohoare/Lake Hawkes
 - Whakapapa Island (Ruarangi)
 - Mangatiti Landing Reserve
 - Kaiwhakauka Conservation Area (Rangipuhia)
 - Matiere Domain
 - Part Whangamōmona Forest Conservation Area
 - Part Ōhinetonga Scenic Reserve (Hautawa)
- 578.4ha, cost of \$830,138
- 6 sites jointly vested in Hāua and iwi neighbours – 206.46ha
- Te Pou Taiao – joint management with DOC over 14 DOC reserves
- Te Tuanui – overlay classification, part Tongariro Conservation Area

NGĀTI HĀUATANGA – cultural redress



- Cost of cultural sites = \$3.55 million
- Leaves \$2.55 million cultural fund for reo & tikanga revitalisation
- Pou whenua on 2 DOC sites
- Statutory Acknowledgements over 48 DOC sites, and 12 Puna Wai sites
- Seat on Tongariro-Taupō Conservation Board
- 15 NZGB placenames changes (p20)
- Mineral fossicking rights – kōkōwai, pākohe, matā/tuhua, pukepoto

10 Nohoanga

- Manaia Road Conservaiton Area
- No. 7 Scenic Reserve
- Tongariro Conservation Area
- Ōhinetonga Scenic Reserve
- Tāngārākau Stream Conservation Area
- Waitāngata Forest Conservation Area (Rerepahupahu Falls)
- Kōpuha Scenic Reserve
- Panepane
- Kaituna Scenic Reserve
- Waiaraia Scenic Reserve





TE PUA O TE RIRI KORE - SUMMARY

- \$29.65 MILL TOTAL VALUE
(including interest)
- LESS
 - \$900K commercial properties
 - \$3.55mill cultural properties
- Leaves \$25.2mill approx. cash for
cultural, social and commercial
kaupapa
- Initial return of 624ha, with scope
for more whenua (via DSPs etc)

TE TĀTAIRANGO O TE KARAUNA – RELATIONSHIP REDRESS


- Relationship Agreements with 15 Crown agencies:
 - Kiwirail, MSD, MFE, OT, MBIE, MHUD, Kainga Ora, TPK, MOH, Corrections, Police, MOE, MOJ, Stats NZ, Toitū Te Whenua DOC partnership framework
- Post-settlement hui with Ministers of Education, Social Development and Children
- Commitment to collective agency forum
- Commitment to *He Piko o Rauru* – Ngāti Hāua social transformation plan
- LINZ “side letter”





TE WHIRINGA KĀKAHO O NGĀTI HĀUA

- RECOMMENDED PSGE:
 - 7 TRUSTEES
 - 3 MIN. MUST BE AHI KĀ
 - ALL CANDIDATES PRESENT TO HUI-A-IWI
 - ALLOWS FOR TE PAE MATUA
 - ABLE TO CHANGE OVER TIME TO REFLECT IWI, HAPŪ & MARAE EVOLUTION
 - REVIEW DEED WITHIN 8 YEARS OF ESTABLISHMENT



ELECTION PROCESS

NGĀTI HĀUA IWI

[Individual iwi members]

HUI-A-IWI

[All trustee candidates must attend in person or online and speak to Hui-A-iwi]

GUARANTEED AHI KĀ VOICE

[At least 3 trustees must be resident within the Ngāti Hāua rohe]

TE WHIRINGA KĀKAHO O NGĀTI HĀUA TRUST

[7 Elected trustees at least 3 of whom must be resident in the Ngāti Hāua Rohe]



ELECTION BY ALL
REGISTERED
ADULT IWI
MEMBERS



STRUCTURE

TE WHIRINGA KĀKAHO O NGĀTI HĀUA

CHARITABLE
ENTITY

COMMERCIAL
ENTITY

HĀUA

Next steps

UPDATE YOUR TRIBAL REGISTRATION DETAILS

ENSURE YOU HAVE YOUR VOTING PACKS

VOTING OPENS 21 DECEMBER 2024, CLOSES 7 FEBRUARY 2025 (for those aged 18 years & over)

VOTE!

16 – 23 JANUARY 2025- ROADSHOW INFO HUI

Est. MARCH/APRIL 2025 - SIGN DEED OF SETTLEMENT

LATE 2025 – NGĀTI HĀUA CLAIMS SETTLEMENT ACT





The TWO resolutions for Voting

- ▶ I, as a member of Ngāti Hāua, agree to support and accept the Ngāti Hāua Deed of Settlement – *Te Pua o Te Riri Kore* – and authorise the trustees of the Ngāti Hāua Iwi Trust to sign the Deed of Settlement on behalf of Ngāti Hāua.
- ▶ I agree that the proposed *Te Whiringa Kākaho o Ngāti Hāua Trust* will be the post-settlement entity for Ngāti Hāua to receive and manage Treaty of Waitangi settlement redress on behalf of Ngāti Hāua.

NGĀTI HĀUA ROADSHOW DATES

WĀHI	RĀ	TIME	Venue
Kirikiroa/Hamilton	Thursday 16 Jan	6.30-9.30pm	Distinction Hotel, 100 Garnett Avenue, Te Rapa, Hamilton
Tāmaki Makaurau/Auckland	Friday 17 Jan	6.30-9.30pm	Novotel Auckland Airport, 35 Tom Pearce Drive, Auckland Airport
Rotorua	Saturday 18 Jan	1.00 -4.00pm	Rydges, 10 Tryon St, Whakarewarewa, Rotorua
Taumarunui	Sunday 19 Jan	11.00am – 1.00pm	Ngāpūwaihaha Marae, Taumarunui Street, Taumarunui
Whanganui	Tuesday 21 Jan	6.00-9.00pm	Ngā Tāngata Tiaki o Whanganui, 357 Victoria Avenue, Whanganui
Pōneke/Wellington	Wednesday 22 Jan	6.30-9.30pm	Wharewaka Function Centre Taranaki Wharf, 2 Taranaki Street, Waterfront, Wellington
Ōtautahi/Christchurch	Thursday 23 Jan	6.30-9.30pm	Novotel Christchurch Airport, 30 Durey Road, Christchurch Airport
Online information hui	Monday 27 Jan	6.30 – 9.30pm	Online links to be provided



How to Vote

- ▶ **PLEASE MAKE SURE YOUR WHĀNAU ARE REGISTERED WITH NHIT.**
- ▶ To register go to our website: www.ngatihaua.iwi.nz or call the NHIT office on 0800 292 4282.
- ▶ Vote online at www.electionNZ.com/settlementvote with your unique pin & password; or
- ▶ Vote at an information hui
- ▶ Vote by post

Pātai / Kōrero?

